



SAPIENZA
UNIVERSITÀ DI ROMA

Sapienza and the Holy Sepulcher rehabilitation project

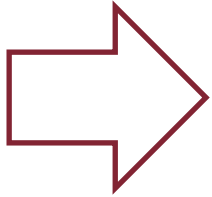
Prof. Gabriele Favero

Full Professor of Chemistry of the Environment and Cultural Heritage

Department of Environmental Biology



CURRENT INTERVENTION ON HOLY SEPULCHER



Restoration of the pavement and geological investigations of the subsoil.

In 2019 Sapienza was involved in the project supervising from an **archaeological point of view** the restoration of the pavement of the Anastasis, inside the basilica.

An **interdisciplinary team** has been constituted to define the historical-architectural sequence:

- Department of Science of Antiquities
- Department of History, Anthropology, Religion, Art History, Media and performing arts
- Department Mechanical and Aerospace Engineering
- Department of Astronautical, Electrical and Energy Engineering



ACQUIRING EXISTING DATA TO CREATE A DATABASE

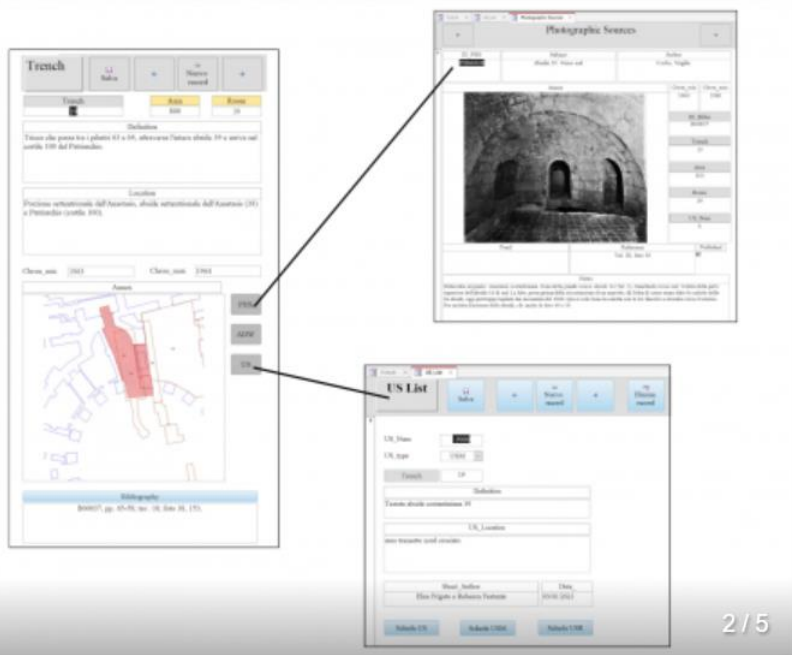
Restoration works give the possibility to analyze in detail the documentation, reconsidering the building history of the Holy Sepulcher

A database has been created

- **Tangible data** (objects, structures, data obtained by past restoration actions)
- **Intangible data** (literature, liturgical sources) that allow for a thorough understanding of the monument

ACCESS TO UNPUBLISHED ARCHIVES

The database includes different data sheets



The screenshot displays two data sheets from the database. The top sheet is titled 'Trench' and includes a 'Subdivision' section with a description: 'Cassa che porta fra i pilastri 12 e 14, adiacente all'area 10 e parte del muro 100 del Peristilio.' Below this is a 'Location' section with the text: 'Piazza antistante all'Areole, strada orientata dall'Areole (1) e Peristilio (muro 100)'. At the bottom, there is a map showing a red highlighted area. The bottom sheet is titled 'US List' and contains fields for 'US Name', 'US type', 'Trench', 'Subdivision', 'Formal description of', 'US Location', 'Start before', and 'End before'. It also features 'Select US' buttons.

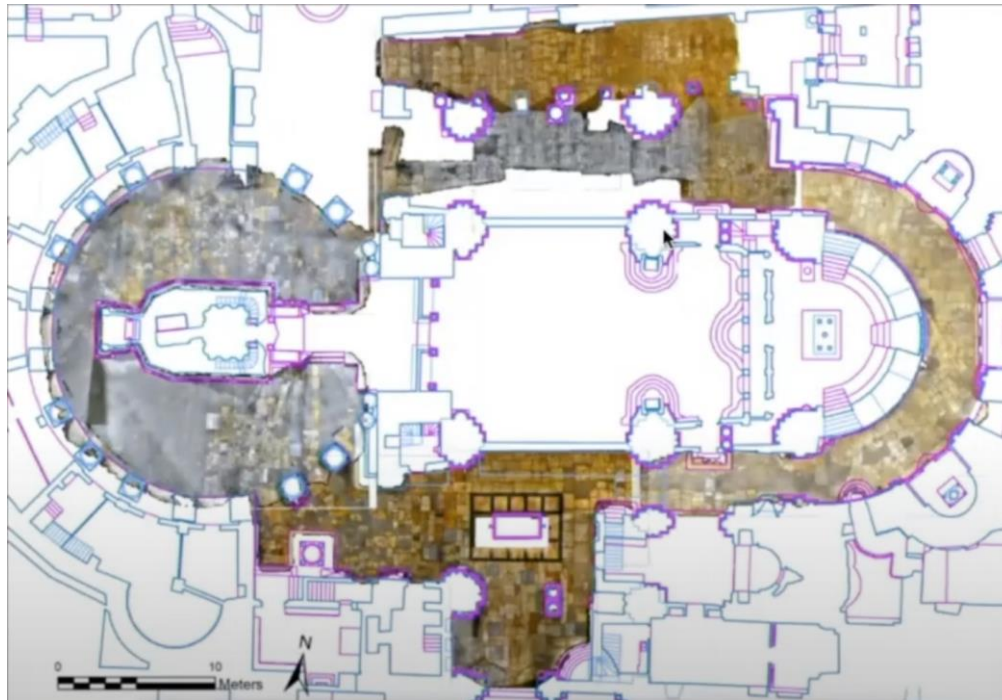


The first screenshot shows an architectural plan titled 'Area' and 'Rotonda o Anastasi'. It includes a table with columns 'Area' and 'Ed. Corbo'. The 'Area' row has the value '300'. Below the table is a map with a red highlighted area. The second screenshot shows an architectural plan titled 'Area' and 'Abside Sud Anastasi'. It includes a table with columns 'Area' and 'Ed. Corbo'. The 'Area' row has the value '300'. Below the table is a map with a red highlighted area.



LOCATION IN A GEO-REFERENCED SPACE

A first survey was carried out on the monument to connect all the acquired data within a GIS system





WORKSHOPS ON THE HOLY SEPULCHER

Department of History, Anthropology, Religion, Art History,
Media and performing arts

- a.a. 2019-20 "Medieval Laboratory on the Holy Sepulcher"

School of Specialization in Archaeological Heritage

- a.a. 2020-21 "Analysis and Integration of Hystoric and Archaeologic Sources"

2 ECTS Laboratory course on the Holy Sepulcher aimed at the implementation of a database based on the study of the historical and archaeological sources.

Focus on the re-creation of spaces, functions, liturgies and structural transformations.



INTEGRATION OF EXISTING INFORMATION

Department of Mechanical and Aerospace Engineering

- optimize the documentation through the classification of shapes, the development of CAD applications for drawing and measurement, the definition of good rendering practices

Department of Astronautical, Electrical and Energy Engineering

- The study of light and sound in ancient buildings to apply the knowledge to the case of the Sepulcher